

# Guidebook for **GNU Exchange Program** < Fall 2025 >



경상국립대학교  
Gyeongsang National University



# | Contents |

**01 Location**

**02 About GNU**

**03 Application Procedure**

**04 Benefits for Exchange Students**



**경상국립대학교**  
Gyeongsang National University

# 01 Location



## 02 About GNU

---

1. History of University
2. Campus
3. Dormitory
4. Contact information



경상국립대학교  
Gyeongsang National University

# 1. History of the University

- Established: 1948
- University Type: National
- Organization: 5 campuses, 17 colleges,  
11 graduate schools, 108 departments
- No. of Student: About 26,286  
(Undergraduate 23,419, Graduate 2,867)
- No. of Staff: 2,425  
(faculty 1,601, Administration staff 824)





## 2. Campus (5 Campuses in 3 Cities)

- Gajwa Campus, located in Jinju-si(city), is the main campus
- The International Office is located at the main campus



Note: The main campus is the **Gajwa Campus**; International Office are located at the main campus

# 3. Dormitory

## • Expenses & Meal Plan

(Currency: KRW (₩), subject to change)

| Building #<br>/ name | Capacity | Gender | Dormitory<br>Expenses<br>(KRW) | Meal Plan<br>〈Required〉   | Facilities   |
|----------------------|----------|--------|--------------------------------|---|--|
| 5                    | 2        | F      | 546,250 ₩                      | 〈Required〉<br>① 120 (408,000 ₩)<br>② 150 (450,000 ₩)<br>③ 190 (513,000 ₩)<br>④ 230 (529,000 ₩)<br>⑤ 300 (660,000 ₩)<br><br>※ Plan cannot be<br>changed after<br>payment | <ul style="list-style-type: none"><li>• Beds</li><li>• Desks</li><li>• Chairs</li><li>• Wardrobes</li><li>• Bookshelves</li><li>• etc.</li></ul> |
| 6                    | 2        | M      | 560,050 ₩                      |   |  |
| 7                    | 2        | F      |                                |   |  |
| Gaecheok<br>( 개척)    | 2        | M      |                                |   |  |
| 8                    | 2        | M      | 572,700 ₩                      |   |  |
| 9                    | 2        | F      | 572,700 ₩                      |   |  |
| 10                   | 2        | M      | 632,500 ₩                      |   |  |
| 11                   | 2        | F      | 632,500 ₩                      |   |  |
| 1                    | 2        | M      | 673,900 ₩                      |   |  |
| 2                    | 2        | M      | 673,900 ₩                      |   |  |
| 3                    | 2        | M      | 673,900 ₩                      |   |  |
| 4                    | 2        | F      | 673,900 ₩                      |   |  |

# 3. Dormitory

## • Facilities

- Student dormitory interior, exterior and convenience facilities

Building 1-4 (interior, exterior)



Building 5 (interior, exterior)





# 3. Dormitory

- **Facilities**

- Student dormitory interior, exterior and convenience facilities

Building 6-9 (interior, exterior)



Building 10 & 11 (interior, exterior)

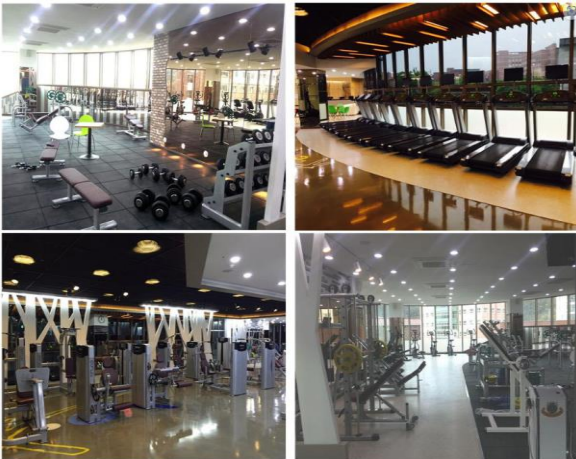


# 3. Dormitory

## • Facilities

- Student dormitory interior, exterior and convenience facilities

Sports hall, Convenience store etc.



## 4. Contact Information

### • International Program Managers

☒ All countries (except China)

Sanghyun MA (Mr.)

Tel: +82-55-772-0286

E-mail: [mash24@gnu.ac.kr](mailto:mash24@gnu.ac.kr)

☒ China

Min-ju KIM (Ms.)

Tel: +82-55-772-0275

E-mail: [mjkim8812@gnu.ac.kr](mailto:mjkim8812@gnu.ac.kr)

#### Homepage

• <https://www.gnu.ac.kr/international/main.do>

#### Address

• Office of International Affairs(1-214), 501 Jinju-daero,  
Jinju-si(City), Gyeongsangnam-do(Province) 52828, Republic of Korea



# 03 Application Procedure

---

1. Requirements
2. Available Programs
3. Procedure & Schedule
4. Course Selection
5. Academic Information
6. Arrival Information
7. Health Insurance



경상국립대학교  
Gyeongsang National University



# 1. Requirements

☑ At GNU, **most courses are taught in Korean(around 90%), and some taught in English(around 10%).** If you are fluent in Korean, you may take any courses that you want.

☑ However, if you are not fluent in Korean, please bear in mind that your course registration can be limited.

You may not find any relevant courses with your majors and even your course application can be rejected by department policy

☑ So, we strongly advise you to take good care of your credits for your Graduation at your home university before coming to GNU.

☑ Graduate students **will officially be admitted** only after being **reviewed and approved by their respective department or laboratory at GNU.**

# 2. Available Programs

## • Programs in Gajwa Campus

| Colleges                     | Departments  |
|------------------------------|--|
| Humanities                   | Language and Literature (Korean, German, Russian, French, English, Chinese), History, Philosophy, Korean Classics in Chinese, Ethnic Dance   |
| Social Science               | Economics, Social Welfare, Sociology, Psychology, Political Science, Public Admin.   |
| Natural Science              | Physics, Life Science, Mathematics, Food and Nutrition, Clothing and Textiles, Information Statistics, Geology, Chemistry  |
| Business                     | Management Information System, Business Administration, Intl' Trade, Accounting  |
| Engineering                  | Mechanical, Aerospace and Information Eng. (Aerospace and), Nano- New Materials Eng., Industrial Systems Eng., Architectural Civil Eng., Architecture, Chemical Eng.   |
| Agriculture and Life Science | Food and Resources Economics, Forest Environmental Resources, Environmental Materials Science, Agricultural Plant Science, Animal life science, Agrochemical Food Eng., Agrosystems Eng. (Biotechnology Industry Mechanical Eng., Area-based Environmental Eng.) |
| Law                          | Law  |
| IT Engineering               | Electrical Eng., Electronics Eng., Semiconductor Eng., Software Eng., Control and Instrumentation Eng., Computer Eng., AI information Eng.   |
| Space and Aeronautics        | Aerospace Engineering  |



# 2. Available Programs

## • Programs in Chilam Campus

| Colleges                                | Departments   |
|---|---|
| Life Sciences                           | Anti-aging Advanced Materials Science, Pharmaceutical Engineering, Computer Science(Computer Software major)  |
| Construction& environmental Engineering | Interior Materials Engineering, Landscape Architecture, Textile Design, Environmental Engineering   |
| Integrated Technology Engineering       | Mechanical Material Convergence Engineering, Mechatronics Engineering, Automotive Engineering, Convergence Electronic Engineering, Energy Engineering |
| Humanities and Social Science           | Social Welfare, Children and Family Studies, English  |
| Business                                | Smart Logistics and Commerce  |

### ※ Note

We advise you to apply for the same or similar major or department at GNU as with your home university.

All the colleges, departments(majors) at <https://www.gnu.ac.kr/eng/cm/cntnts/cntntsView.do?mi=8527&cntntsId=4497>

And you can find course information at <https://www.gnu.ac.kr/main/na/ntt/selectNttList.do?mi=16549&bbsId=4526>



# 3. Procedure & Schedule

| Step   | Nomination Deadline  | Application Deadline  | Announcement of Acceptance   | Sending Certificate of Admission |
|--------|----------------------|-----------------------|------------------------------|----------------------------------|
| Spring | Nov. 1 <sup>st</sup> | Nov. 15 <sup>th</sup> | Early December (Details TBA) | Mid December (Details TBA)       |
| Fall   | May 1 <sup>st</sup>  | May 16 <sup>th</sup>  | Early June (Details TBA)     | Mid June (Details TBA)           |

• Semester Start Date

Spring Semester : The first working day of March

Fall Semester : The first working day of September

1) Nomination

- To whom is responsible for the International Exchange Program, please fill out the ‘Nomination Form’ and send it by an email to the International Program Manager at GNU
- ※ The ‘Nomination Form’ will be included in the recruitment notice email



## 3. Procedure & Schedule

### 2) Application

- Go to [www.studyinkorea.go.kr](http://www.studyinkorea.go.kr) and register as a new member, and access the application link
- Application link will be included in the notice email

#### Required Documents

- [Photo](#) (3.5\*4.5cm)
  - [Official Academic Transcript](#) (issued by the home institution)  
※ Graduate students must also submit the official transcript of their undergraduate academic records.
  - [Official Certificate of Enrollment](#) (issued by the home institution)
  - [Copy of Passport](#)
  - [Medical Checkup](#) (Form Provided)
  - [Letter of Recommendation](#)
  - [Permission for the Use of Personal Information](#) (Form Provided)
- Complete the online application form
- ### 3) Notification of Acceptance
- Notification of Acceptance will be sent to the International Program Manager of each university via email.

## 3. Procedure & Schedule

### 4) Sending Admission Documents

- We shall dispatch the admission documents to the International Office of each respective university
- We kindly request that you subsequently facilitate their dissemination to the students, enabling them to initiate the visa application process

## 4. Course Selection

☑ Course registration is scheduled one month prior to the commencement of the semester

Also, there is the option to apply during the additional course registration period within the initial week following the commencement of the semester

☑ While we recommend exchange students to take courses among their own departments' curriculum, **they are also allowed to take other preferred courses in other departments**

### ※ Note

- For an overview of courses taught in a foreign language, kindly refer to the link provided below  
<https://www.gnu.ac.kr/main/na/ntt/selectNttList.do?mi=16549&bbsId=4526>
- The course list for **the Fall semester** will be updated in **mid-August**, and the course list for the **Spring semester** will be updated in **mid-February**
- Apart from the list, there are **basic Korean courses for beginners and intermediates**
- The enrollment requirements, such as **grade level and department restrictions**, may vary for each course. These details can **only be confirmed during the actual course registration process**
- All exchange students will be assigned to the main campus dormitory. It is essential to **check** whether the **courses are held on the main campus**.

## 5. Academic Information

- Semester

Spring Semester : The first working day of March ~ Mid June

Fall Semester : The first working day of September ~ Mid December

- Credit System

At GNU, **1 credit** consists of **50 minutes** coursework per week for **15 weeks** during the semester.

## 6. Arrival Information

- Pick-up service will be provided from ICN to GNU

※ The service is **ONLY** available for arrivals at **Incheon Airport (ICN)**

- Orientation

Orientation will be held for the incoming international students at the end of Feb. or early Mar. for Spring semester (end of Aug. or early Sept. in the Fall semester)

## 7. Health Insurance

- Students are **automatically enrolled** at health insurance after registering an **Alien Registration Card (ARC)**

- Registered health insurance is a **mandatory** for those **staying in Korea**. It **cannot be canceled**, even if students have their own insurance from their home country

※ Estimated Amount(KRW): 84,150 (each month)



# 04 Benefits for Exchange Students

---

1. Welcome Week
2. Buddy/Mentoring Program
3. Korean Language Class
4. Cultural Exploration
5. Career & Employment Programs



경상국립대학교  
Gyeongsang National University

# 1. Welcome Week

- **Airport Pickup Service:** We provide a pick-up bus from the Incheon airport (ICN) to GNU
- **Course Registration:** Students may enroll in the course with a Buddy for up to one week following the commencement of the new semester.
- **Alien Registration:** We offer guidance on Alien Registration for a secure life in Korea.

## 2. Buddy / Mentoring Program

- Each incoming exchange students will be matched 1:1 with a Korean students(Buddy Program) who will support the campus life
- Support the Dormitory check-in
- Help with course registration and adjustment to school life from the beginning of the semester
- Support for Korean language and department classes through continuous exchange with each Buddies
- Participate in local and University festivals



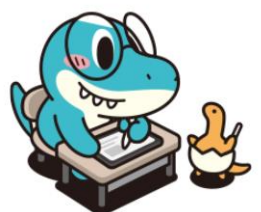
# 3. Korean Language Class

## Purpose

- Korean conversation classes and TOPIK test preparation classes for foreign students
- Improve Korean conversational skills to increase academic achievement and support adaptation in Korea

## Period and Benefits

- Period: 8~9 weeks < 48-54 Hours >
- Completion criteria: Awarding a certificate of attendance for **achieving 80% or higher attendance**
- Completion benefits: **Tuition waiver**





## 4. Cultural Exploration

### Purpose

- Providing opportunities for cultural experience and enhancing understanding of Korea to enhance university life satisfaction

### Summary for Program

- Period: During the semester  
(end of March - May / end of September - November)
- Number of Sessions : 2-3 times per semester
- ※ The number of sessions and schedule may change depending on the situation of each semester





## 4. Cultural Exploration

### Sports Activities

- At the GNU Sports Complex, we offer opportunity to partake in one-day session of experiencing various sports activities, including swimming, Pilates, and yoga at no additional cost
  - An International Students' Sports Day is hosted during the spring semester, providing students with the opportunity to engage in a diverse range of sporting activities
- ※ Please note that the scheduling and frequency of this activity may be subject to adjustment based on the prevailing circumstances



## 5. Career & Employment Programs

- We provide valuable opportunities for students to participate in a range of employment-related initiatives, including involvement in career fairs and related activities.



THANK YOU!



경상국립대학교  
Gyeongsang National University