



Exchange Fact Sheet 2023



Fast Facts

In the top 1% of universities in the World

#1 in Australia for graduate employment rate

More than 44,000 students from over 100 countries

Only 15 km away from the Sydney Central Business District

The only university in Australia with its own metro station

Academic Dates

Semester Dates	Session 1, 2023	Session 2, 2023
Orientation Week	13 - 17 February, 2023	17 - 21 July, 2023
Session Dates (including exam period)	20 February - 23 June, 2023	24 July - 24 November, 2023
Nomination Deadline (for partners)	15 November, 2022	15 April, 2023
Application Deadline (for students)	30 November 2022	30 April 2023

Application Procedure

1. Partner universities nominate their students for an Exchange program at Macquarie university within the corresponding time frame. Nominations are submitted through our [Nomination Form](#).
2. Once the student's nomination has been approved by Macquarie University, the student home university will send the application link to apply for the Exchange program.

For more information regarding our Exchange Program, please have a look at the [Macquarie University Study Mobility Team & Exchange Website](#).

We will soon share our updated Study Abroad and Exchange Brochure with all our partners via email.

Important Information

Travel Advisory	<p>From July 6 2022, people entering Australia do not need to provide evidence of vaccination status and unvaccinated visa holders do not need a travel exemption to travel to Australia.</p> <p>As the policies are subject to change, it is important that you update yourself on any new information.</p> <p>You are also encouraged to refer to the New South Wales Government page to see the current policies in place.</p> <p>Please bear in mind that airlines, vessel operators and other countries may have specific requirements that travellers need to comply with.</p>
Unit Guide and Handbook	<p>Please explore our Course Handbook and Unit Guide to pre-select your units for your upcoming exchange program.</p> <p>You can select and study units from any of our faculties. While selecting the units, you must consider the following:</p> <ul style="list-style-type: none">• Units are available in the enrolled semesters:<ul style="list-style-type: none">○ Session 1: February to June, OR○ Session 2: July – December• Suitable to the students' level of study (UG = Undergraduate and PG = Postgraduate):<ul style="list-style-type: none">○ Undergraduate level = 1000 level (1st year)○ Undergraduate level = 2000 level (2nd year)○ Undergraduate level = 3000 level (3rd year)○ Postgraduate level = 8000 and 9000 level <p>You must ensure that you have met the academic prerequisites or equivalent at your University.</p>
Restricted Units	<p>Please find the list of restricted units, which are not available to Exchange students.</p>
Programs with special entry requirements	<p>Postgraduate Law School: 180 ECTS completed to be admitted to the postgraduate exchange Law program (Students can study 8000- level units).</p> <p>Postgraduate Psychology: Admission to units in PG Psychology is not guaranteed. Students have to be admitted to a Master of Psychology program in either organizational, neuropsychology or clinical psychology. Please send the units request approval before applying to the program to:</p> <ul style="list-style-type: none">• Rachael Rotton E: rachael.rottton@mq.edu.au• Novello Alday E: novello.alday@mq.edu.au

	<p>If the student is only in the first semester of their relevant Master's program, they may not have sufficient training in requirements for units being requested, and will need prior approval by the Psychology department.</p> <p>In this case, please contact Rachael Rotton and Novello Alday at the emails above.</p>
Academic Requirements	<p>Weighted Average Mark (WAM) requirement:</p> <ul style="list-style-type: none"> • Non-Law students = 60 % • Law students = 65 %
English Requirements	<p>Minimum requirement: IELTS (Academic) - 6.5 overall with 6.0 in each section.</p> <p>For a detailed list of other acceptable levels of English proficiency and English language package providers as approved by Macquarie University, please refer to our English Requirements page.</p>
Macquarie University Grading System	<p>Please visit our Grading System page.</p>
Accommodation	<p>There are university-operated accommodation and off-campus accommodation options available.</p> <p>Please visit our Accommodation page to learn more about these options.</p>
Campus Support System	<p>Macquarie offers several personal support services that students can reach at any time.</p> <p>Please explore our Student Support Services system.</p>

Macquarie University Promotional Videos

You to the Power of us:

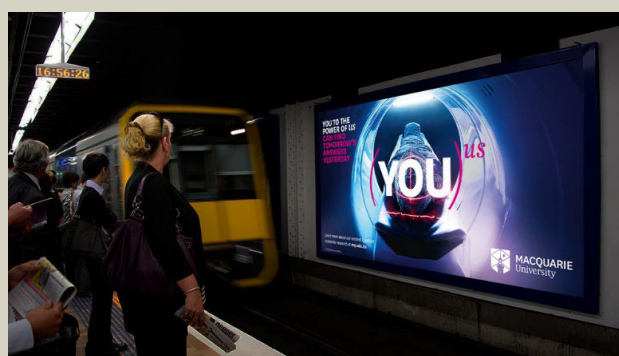
<https://www.youtube.com/watch?v=8DdlXldJIU>

Campus Tour Video:

https://www.youtube.com/watch?v=UnwtlW_x9vo

Macquarie University Website

<http://mq.edu.au/>



Contact us



Ground Floor, 8 Sir Christopher Ondaatje Avenue, Macquarie University NSW 2109 Australia



E: mi.exchange@mq.edu.au



T: +61 2 9850 7334

