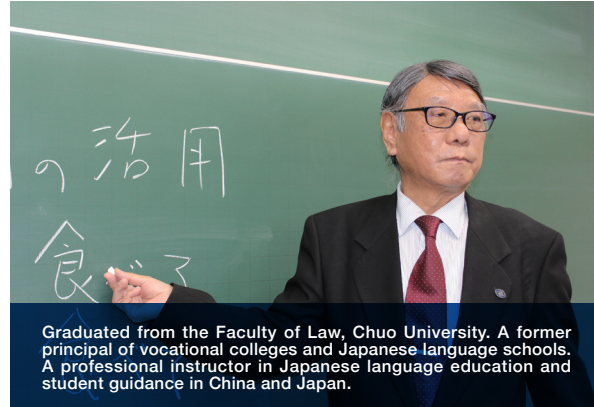


Introduction of teachers

In addition to the following teachers, there are more teachers specializing in Japanese, English, Math, and Science.



Hiroyoshi Suzuki 鈴木 宏昌

[Japanese and Japan and the World]

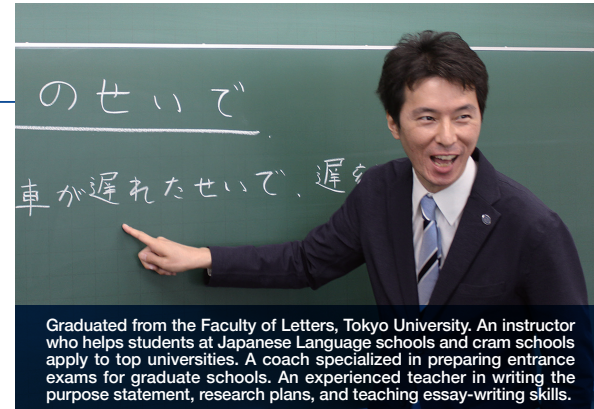
It can be tough to come to Japan to live, study in a completely different culture, and use an unfamiliar language. However, studying abroad gives you more opportunities to learn than staying in your own country. Please experience and study a lot in Japan. Feel free to contact us for anything you don't understand in your study or when you have problems in your life. I want to follow up to help international students realize their dreams.

Graduated from the Faculty of Law, Chuo University. A former principal of vocational colleges and Japanese language schools. A professional instructor in Japanese language education and student guidance in China and Japan.

Tokio Fujisawa 藤澤 宗生

[Japanese and Career Guidance]

"I want to continue my higher education in Japan", "I want to work for a Japanese company", "I want to go back to my country and do a job relating to Japanese", "I like Japanese culture", ... You probably have various reasons to come to Japan, don't you? Our goal is to help each of you to make your dreams come true. Please broaden your horizons and live a wonderful life by studying the Japanese language and culture at this school. Let's study together!



Graduated from the Faculty of Letters, Tokyo University. An instructor who helps students at Japanese Language schools and cram schools apply to top universities. A coach specialized in preparing entrance exams for graduate schools. An experienced teacher in writing the purpose statement, research plans, and teaching essay-writing skills.

Introduction of staffs

Besides the following staffs, we also have those who can speak various languages from all over the world.

Ulziiyargal Kh.

ウルジージャールガル

I completed my graduate program from Toyo University. I can speak Mongolian and Chinese Language. I will do my best to support students to get the higher education and job hunting. Let's study together.



Dhawal Binaya

ダカル ビナヤ

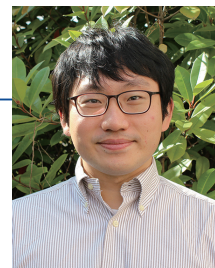
Graduated from Japan University of Economics. Can speak Nepali, English, and Hindi. Support International students who're having trouble in Japanese lifestyle. Please feel free to consult about anything.



Munsuk Choi

崔 文錫

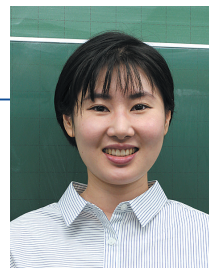
I completed my graduate program from Meiji University. I can speak Korean and English Language. I will support students to make their lifestyle comfortable. Let's enjoy Japanese life together!



Liu Senyan

劉 森炎

Post graduated student from Josai International University. Can speak Chinese and also can assist a bit with Korean language. contact for Job guidance, assistance to International students in Japan and many more.



Tuition fee

*Tuition fee included tax. *We have scholarships for students. Please contact us for details.

Admission period ... Applicants can choose between April and October.

Available courses ... There are 3 courses, including 1-year course, 1-year-6-month course, and 2-year course.

1-year course

Courses	1st year
Application fee	¥20,000
Enrollment fee	¥120,000
Tuition fee	¥620,000
Text fee	¥20,000
Student insurance	¥10,000
Other fees	¥25,000
Total	¥815,000

Classroom are clean and bright.



1-year course Total
¥815,000

1-year-6-month course

Courses	1st year	6 months left	Total
Application fee	¥20,000	-	¥20,000
Enrollment fee	¥120,000	-	¥120,000
Tuition fee	¥620,000	¥310,000	¥930,000
Text fee	¥20,000	¥10,000	¥30,000
Student insurance	¥10,000	¥5,000	¥15,000
Other fees	¥25,000	¥5,000	¥30,000
Total	¥815,000	¥330,000	¥1,145,000

1-year-6-month course Total
¥1,145,000

2-year course

Courses	1st year	2nd year	Total
Application fee	¥20,000	-	¥20,000
Enrollment fee	¥120,000	-	¥120,000
Tuition fee	¥620,000	¥620,000	¥1,240,000
Text fee	¥20,000	¥15,000	¥35,000
Student insurance	¥10,000	¥10,000	¥20,000
Other fees	¥25,000	¥10,000	¥35,000
Total	¥815,000	¥655,000	¥1,470,000

2-year course Total
¥1,470,000

Takarazuka University of Medical and Health Care,
Tokyo Campus - Bekka Japanese Language Program for International Students

6-25-13, Higashinippori, Arakawa Ward, Tokyo, Japan
Postal Code: 116-0014

Tel : +81-3-6458-3394 Fax : +81-3-6458-3395
E-mail : bekka.t@tumh.ac.jp



TAKARAZUKA UNIVERSITY of
MEDICAL and HEALTH CARE



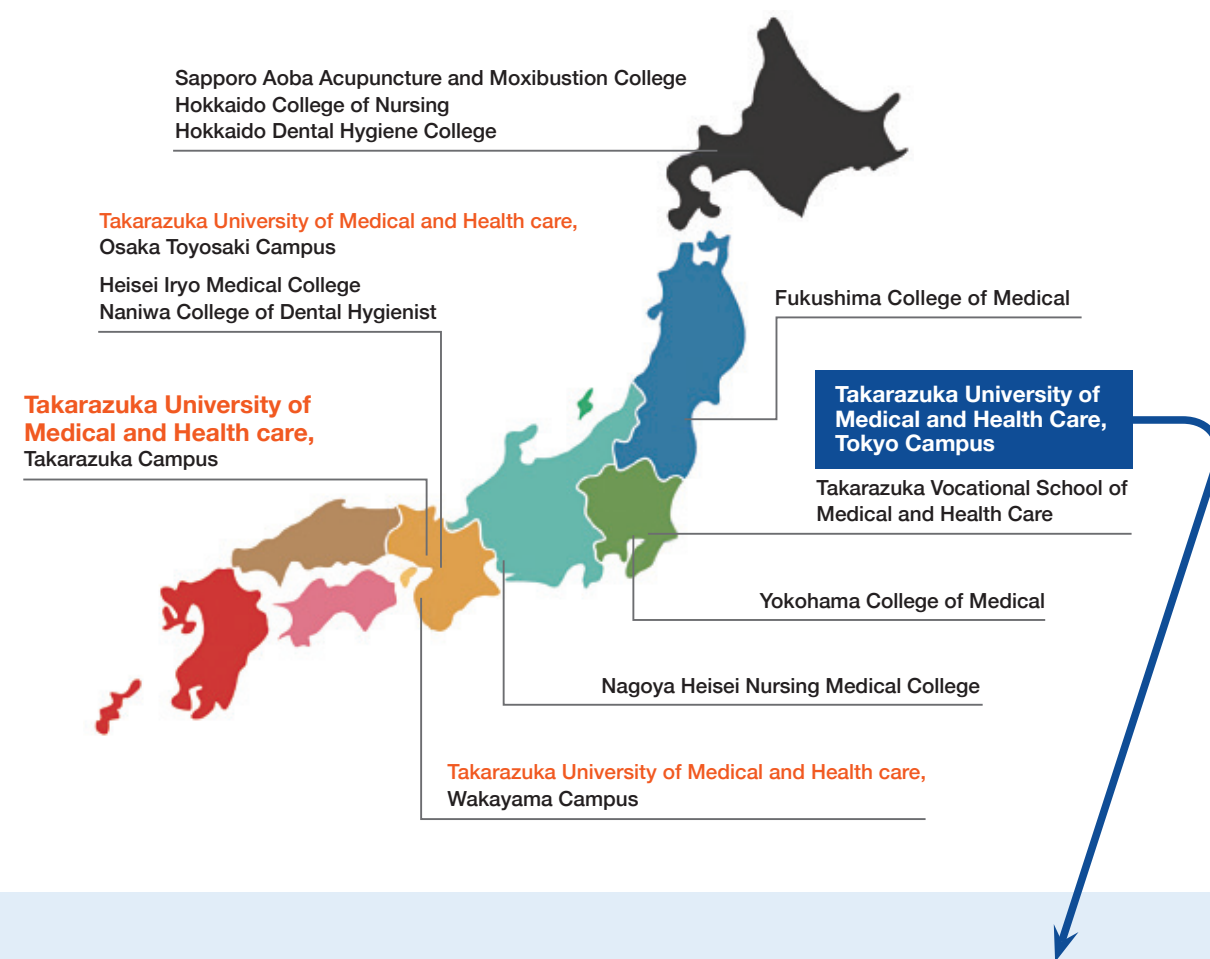
TAKARAZUKA UNIVERSITY of
MEDICAL and HEALTH CARE

Tokyo Campus - Bekka Japanese Language Program
for International Students



Takarazuka University of Medical and Health Care Tokyo Campus – Bekka Japanese Language Program for International Students

Takarazuka University of Medical and Health Care is a private university operating four-year educational programs, which belongs to Heisei Medical School Group.



Tokyo Campus – Bekka Japanese Language Program for International Students

The Bekka Japanese Language Program of Takarazuka University of Medical and Health Care can not only increase the Japanese ability of the international community but also educate learners about Japanese society and culture. The university aims to deepen students' background knowledge and sharpen their essential skills. Therefore, they can go to higher education or get a job in Japan. Since this is the Japanese language course offered by a university, after graduation, students can choose to continue their higher education program either at the Takarazuka University of Medical and Health Care or other schools belonging to the Heisei Medical School Group. On the other hand, if students wish to apply to other Japanese universities, graduate schools, or vocational colleges outside Heisei Medical School Group, we can provide students with consultation and career guidance in correspondence with everyone's future vision. Our goal is to encourage interactions among international students, thus cultivating students' global sense via the understanding of cultural differences. Therefore, we can improve their communication skills, as well as learners' integration capability into such a global environment.

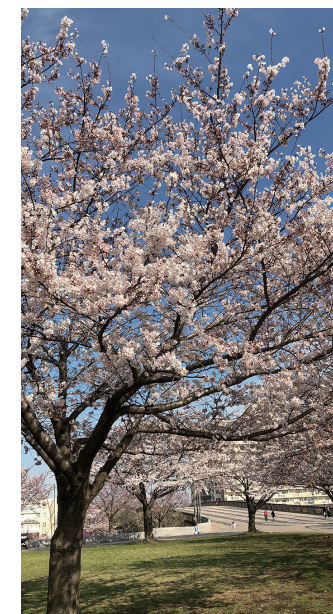


Tokyo Campus

Takarazuka University of Medical and Health Care, Tokyo Campus is located in Nippori, the host city of the Olympic Games, which lies in the center of Japan. Even though Nippori locates in Tokyo, the symbol of globalization in Asia, it can still retain the remnants of good old towns. On the other hand, there are many part-time jobs for students in restaurants or convenience stores. Moreover, it is easy to reach the famous towns in Tokyo. Learners not only focus on studying but they can also enjoy their student life.



A popular traveling destination for foreigners, Asakusa.



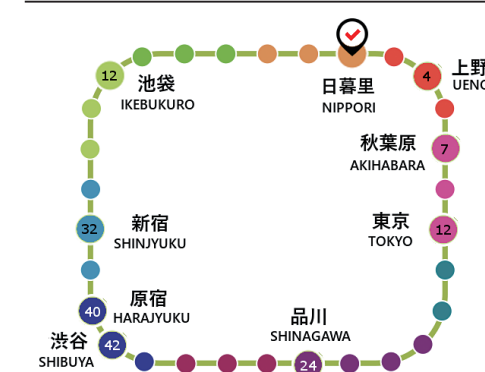
It is possible to enjoy cherry blossom viewing near the Tokyo Campus.



You can enjoy winter skiing even in the Kanto area (about 2 hours from Tokyo if going by Shinkansen)

Access

※Numbers presents approximate travel time (in minutes) from our campus



Access by train

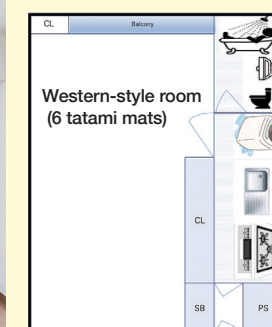
- ◆ About 50 minutes from Haneda Airport
- ◆ About 12 minutes to reach Tokyo station
- ◆ About 7 minutes to reach Akihabara station
- ◆ About 60 minutes from Narita Airport
- ◆ About 32 minutes to reach Shinjuku station

Around the campus

Tokyo National Museum/ Ueno Zoo/ Ueno Onshi Park/ National Museum of Nature and Science / National Museum of Western Art/ Ueno Royal Museum/ YANESSEN Yanaka – Nezu – Sendagi (they are increasingly popular to foreigners' cultural experience)

We support your student life.

It is natural that when you first come to a foreign country, you will have a lot of things to learn. Whenever you have difficulties in finding your house, part-time jobs, or questions about visas, etc., please feel free to share with us. In the office, we have staffs who can speak English, Chinese, Korean, Mongolian, and Bengali. All staffs are former international students and seniors. You can contact us for anything. In terms of housing, our partner real estate company will find a room near the school for you. If you live alone, the housing rent in Arakawa Ward is from 35,000 yen and above. If two or three people live together, the rent each person has to pay will be much cheaper.



Education/ Career

Learn about Japan

- You will be instructed by experienced teachers and study in classes that are organized in response to your Japanese level.
- Since it is a credit-taking system, you can create a study schedule that suits you.
- Emphasis on practical communication skills. You will have opportunities to talk with Japanese people other than teachers.
- Prepared classes for the Examination for Japanese University Admission for International Students (EJU) and the Japanese Language Proficiency Test (JLPT).
- Besides Japanese, we also offer other courses including English, Mathematics, Physics, Chemistry, Biology, and Japan and the World.
- Lectures on PC operation (such as Word, Excel, PowerPoint, etc.) that are indispensable for higher educational level and job hunting.

Know about Japan

- We support designing a career path by considering everyone's future.
- We provide information on school admissions, such as the entrance examination system in Japan. We also help you to prepare for the entrance examination at the school you wish to apply to.
- Learn Japanese etiquette and prepare for interviews when you go to another school or do job hunting.
- We hold meetings for you to hear the experiences of senior foreigners who are enrolled in Japanese universities or hired by companies.
- We provide special seminars about business skills or presentation.
- Entrepreneurship lessons for students who want to start their own business in the future.

Enjoy Japan life

- Excursion (Amusement park, hiking, etc.)
- Field trips (such as Sumo Club, Fish Market, Food factory, etc.)
- Events (Japanese Karaoke Festival, Speaking contest, Sport competition, etc.)
- Cultural experience (tea ceremony, flower arrangement, Yukata, fireworks, festivals, etc.)
- Visiting Japanese popular places (Sacred place of Anime, Oshare spot, high-rise building tour, Night view spot, etc.)

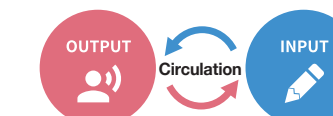
Curriculum

Curriculum example (For 1-year course)

Subject classification	Class name	Number of credits	Required number of credits	
Compulsory Subjects	Group 1 General Japanese Language Course	Japanese (General) I	24 credits	
		Japanese (General) II		
		Japanese (Reading comprehension) I		
		Japanese (Reading comprehension) II		
		Japanese (Grammar) I		
		Japanese (Grammar) II		
		Japanese (Listening) I		
		Japanese (Listening) II		
		Japanese (Characters and vocabularies) I		
		Japanese (Characters and vocabularies) II		
		Japanese (Writing) I		
		Japanese (Writing) II		
		Japanese (Communication) I		
		Japanese (Communication) II		
Subtotal (14 subjects)		14		
Compulsory Subjects	Group 2 Special subjects	Japanese Language Proficiency Test Preparation I	4 credits	
		Japanese Language Proficiency Test Preparation II		
		EJU preparation I		
		Japanese Society I		
		Japanese Society II		
Subtotal (5 subjects)		10		
Elective subjects	Group 3 Comprehensive subjects	Japan and the World I	4 credits from the left side	
		Japan and the World II		
		Japanese Culture I		
		Japanese Culture II		
	Subtotal (4 subjects)			6
	Group 4 Elemental courses	English		4 credits from the left side
		Mathematics		
		Physics		
		Chemistry		
		Biology		
Subtotal (5 subjects)		10		
Total : 28 subjects		40	Total : 28 credits	

Curriculum features

In each subject of Group 1, you will learn Input ability (Reading, Listening), and Output ability (Writing, Speaking) in a well-balanced routine, as well as establishing the elemental capability of Japanese communication.



The subjects in Group 2 are mainly Japanese language courses prepared for the Japanese Language Proficiency Test (JLPT) and the Examination for Japanese University Admission for International Students (EJU). By using studying materials following exam questions, as well as solving problems appearing in previous tests, you will practice until you can understand all questions in Japanese exams.



Each subject in groups 3 and 4 is an effective course in helping you prepare for the Examination for Japanese University Admission for International Students. Also, you can acquire basic academic knowledge that is essential for studying at the university. Since these subjects are elective, you can choose the courses you want to study.



Examination for Japanese University Admission for International Students

In the "Japanese Culture" and "Japanese Society" classes, you will learn the important cultural knowledge to live in Japanese modern society. Simultaneously, you will study Japan's history, politics, and economy, together with watching anime and movies.