



Office of International Affairs, NCTU
國立交通大學國際事務處

2019 NCTU SUMMER PROGRAM



JOIN US FOR A 4-WEEK
INTENSIVE COURSES
AND EXPLORE TAIWAN!



2019
NCTU
SUMMER
PROGRAM

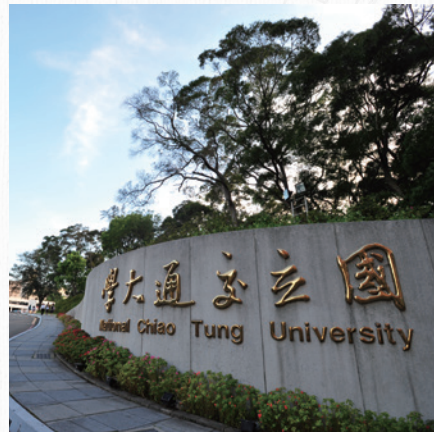


2019 NCTU Summer Program

Program Period

July 15 -
August 7

4 Modules
2-credit Courses



ABOUT NCTU

Situated in Hsinchu, the “Silicon Valley” of Taiwan

Strong Academic-Industrial Collaboration

QS Asian University Rankings, 2019: #45

QS World University Rankings, 2019: #208

QS Graduate Employability Ranking, 2019: #141-150

11 Departments/Institutes were accredited by Institute of Engineering Education Taiwan (IEET)

The College of Management was accredited by the Association to Advance Collegiate Schools of Business (AACSB) since 2007.



China Student: April 10
Int'l Student: April 22

May 10



July 10 & 11

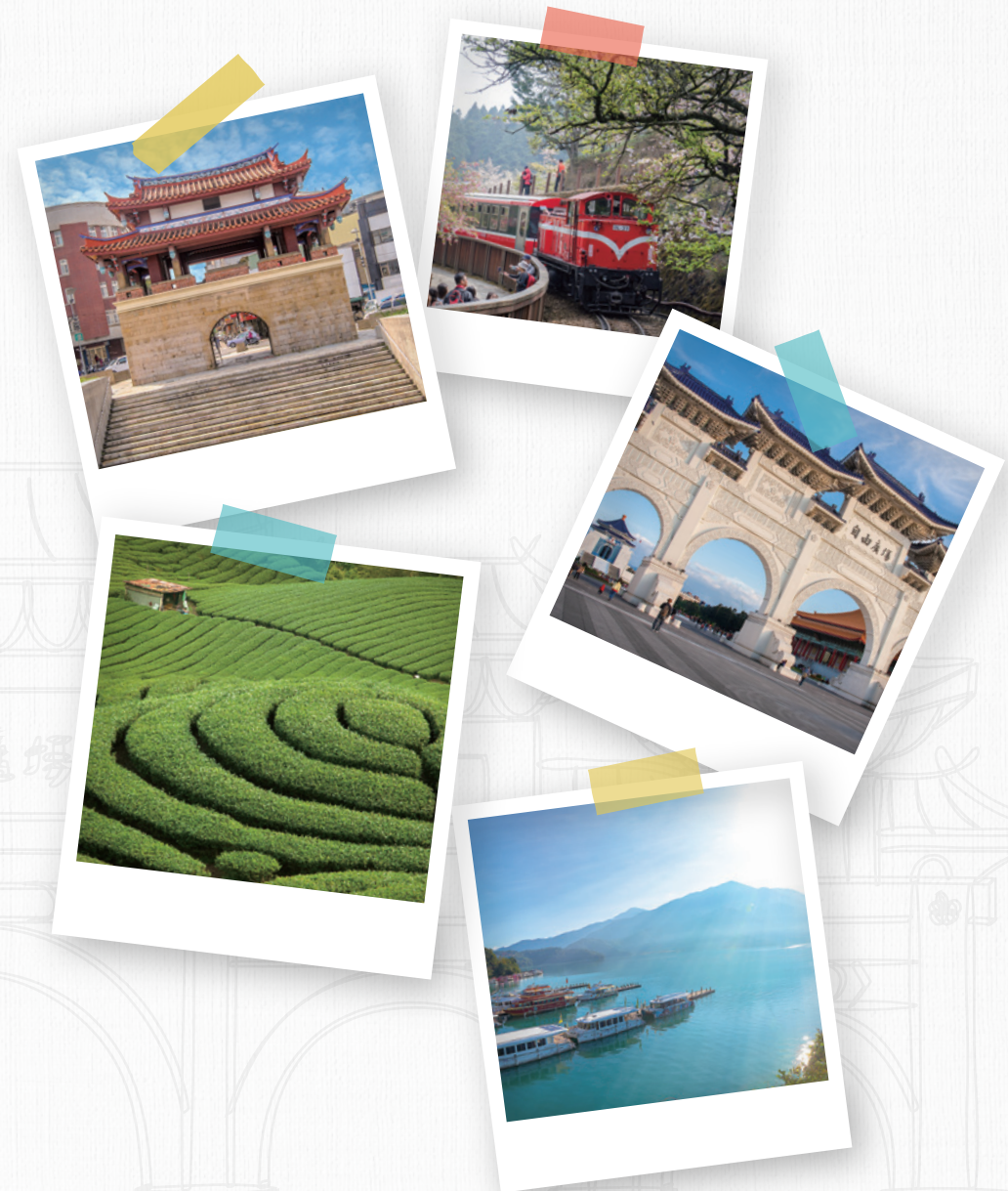
July 12

July 15
↓
August 7

August 8 & 9

| Partner University Students | | International Students | |
|-----------------------------|------------|--------------------------|------------|
| Application Fee | NTD 5,000 | Application Fee | NTD 8,000 |
| Program Fees | NTD 28,000 | Program Fees | NTD 40,000 |
| Cultural Activity | Included | Cultural Activity | Included |
| Accommodation (Optional) | NTD 12,000 | Accommodation (Optional) | NTD 12,000 |

- Students from Mainland China need to apply for "Entry Permit to Taiwan", thus an additional fee (NTD 600) will be charged.
- The application fee is non-refundable.
- Accommodation Fee is not refundable if cancelation is requested after June 15, 2019






COURSE SCHEDULE


| Time | Monday | Tuesday | Wednesday | Thursday | Language |
|---------------------|---|---------|-----------|---|-----------------|
| 09:00 12:00 | Introductory Chinese I | | | 3 Cultural Trips: July 18th July 25th August 1st | English/Chinese |
| | Introduction to Linguistics | | | | English |
| | The Competitiveness of Asian Enterprises from the Aspect of Innovation and Entrepreneurship | | | | English |
| | Digital Circuit Design | | | | English |
| | Introduction to the Seismic Behavior of Steel Structural Systems | | | | English |
| 13:30 16:30 | Language and the Human Mind | | | English | |
| | Children, Communication, and Language Ability | | | English | |
| | Computer Organization | | | English | |
| | Each Course: 2 credits / 36 Hours (7/15~8/7) | | | | |


CONTACT


NATIONAL CHIAO TUNG UNIVERSITY
Office of International Affairs

 1001 University Rd., Hsinchu City 30010,
Taiwan R.O.C.

 Program Manager: Ms. Janet CHEN

 Tel: +886-3-571-2121 ext.50661

 Fax: +886-3-573-1716

 Email: nctu.summer.program@g2.nctu.edu.tw

The course schedule is tentative and subject to change. Please regularly refer to our website.



EXPERIENCE HSINCHU,
EXPLORE TAIWAN,
JOIN 2019 NCTU
SUMMER PROGRAM!



Apply? Scan it!