

WHY NTHU

No.1
The most US patent holdings among Taiwan universities

Top 2
Universities in Taiwan

Well-Located
NTHU is located in Hsinchu, the silicon valley of Taiwan.

Top 100 ranked
In 11 Subjects:
Engineering and Technology, Electrical and Electronic, Materials Sciences, etc.

NTHU

One of the Top Research Universities!
NTHU is a renowned comprehensive research university in Taiwan with the highest rate of faculty winning national academic accolades and the most US patent holdings among Taiwan universities (world ranking: 11th) given its mediocre size of ~800 full time faculty members and 15,000 students. It is among the top 2 universities in Taiwan, ranking 168th in the world according to the latest QS report with several specific disciplines ranking in the top 100.

NTHU and HSINCHU CITY

NTHU is located in Hsinchu, the silicon valley of Taiwan, surrounding by other research institutes(e.g. Hsinchu Science-Based Industrial Park, Industrial Technology Research Institute, National Synchrotron Radiation Research Center, National Center for High-Performance Computing and National Measurement Laboratory) that there is no other university in Taiwan that has a better leaning environment and greater access to research facilities than NTHU.









With recent thriving economy and development, we have great High-Tech research resource and convenience public transportation, such as the buses and High Speed Rail (HSR). The Taipei-bound buses are right outside the NTHU main gate, frequent (every 10-15 min) and almost around the clock. Besides, it takes 40 min ride from the international airport, 2-3 hours ride from Taichung, Kaohsiung, etc, by HSR. So you can enjoy the pleasant climate and to have a quality stay in one of the most beautiful, resourceful campuses in Taiwan for a summer.

2021 NTHU GLOBAL SUMMER SCHOOL

Highlight Your Summer in High-Tech City!

OGA
OFFICE of
GLOBAL
AFFAIRS

Website <http://oga.nthu.edu.tw/index/index/lang/en>
E-mail dis@my.nthu.edu.tw
Tel +886-3-5715131 ext. 62451
Address No. 101, Section 2, Kuang Fu Road, Hsinchu, Taiwan 300044

	Life science		Integrated Circuit Processing	Exploring Taiwan:
Chemical Engineering		Art and Urban Culture of Taiwan		Introduction of the Silicon Valley in Taiwan
	Globalization Management		Administration Management	Basic Mandarin Course
				



Join Us! ▼

NTHU GLOBAL SUMMER SCHOOL

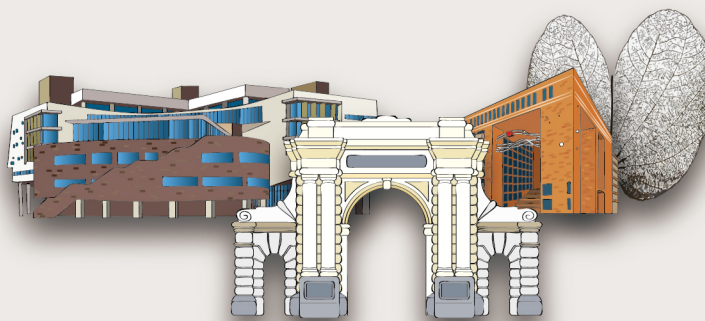
The 2021 National Tsing Hua University Global Summer School (NTHU GSS), Jul 16 to Aug 1, offers 6 courses in the fields of Life science, Chemical Engineering, Globalization Management, Integrated Circuit Processing, Art and Urban Culture of Taiwan, Administration Management.

We offer two different programs for students. Program A contains in-class lectures with plenty of choices, covering a wide range of academic fields. Program B combines in-class lectures with field trips, extending the learning from class.

Except for the academic courses, we also offer Basic Mandarin course as an optional course (additional fee US\$200) for students who would like to enhance language ability.

In addition, Two one-day culture tours are arranged for both Program A and Program B. We will introduce you to various aspects of Taiwanese rich culture.

We accept no more than 26 participants this year. Don't miss it!



COURSE INFORMATION

Program Choice

Program A

2 In-class Lectures (total 36 hours, offer 2 credits)
2 Culture Tours (National Palace Museum, Sun Moon Lake)

Program B

1 In-class Lecture (total 18 hours, offer 1 credit)
1 Experiencing Taiwan course (total 18 hours, offer 1 credit)
2 Culture Tours (National Palace Museum, Sun Moon Lake)

Optional Choice (Additional Fee)

We offer three optional choices for students who want to experience more during our program period.

After choosing either Program A or Program B, Student may enjoy course below with an additional payment of USD200 for each course.

- (1) Course 7 - Exploring Taiwan: 18 hours, offer 1 credit
- (2) Course 8 - Basic Mandarin Course: 18 hours, 1 credit
- (3) One more in-class lecture: 18 hours, 1 credit, choose 1 more course among course 1-6

Notes:

- (1) Courses might be suspended if there are less than 5 students.
- (2) All the courses are offered in English, except the Basic Mandarin Course and cultural tours.
- (3) We reserves the right to cancel course, change faculty and/or room assignments, modify its calendar, and make adjustments to the course schedule.

Code	Course	Lecturer
1	Art and Urban Culture: the West and the Local	Prof. Lin Chang
2	Biodegradable Polymers in Biology, Medicine, and Environment	Prof. Jane Wang
3	The Basics for Globalization Management	Prof. Shu-shiuan Lu
4	How to make a smart decision	Prof. Cheng, Kuo-Tai
5	Contemporary life science and your life	Prof. Yu-Chun Lin Prof. Chen-Siang Ng Prof. Tsung-Han Kuo
6	Introduction to Integrated Circuit Processing	Prof. Ta-Jen Yen
7	Exploring Taiwan: Introduction of the Silicon Valley in Taiwan	Multipal Lecturer
8	Basic Mandarin Course	NTHU Chinese Language Center

Credits and Transcripts

We give one credit per course according to the regulation in Taiwan and would offer transcript after students finish the program.

APPLICATION

Eligibility

Must be currently enrolled in a foreign college or university.

Application Deadline

April 30, 2021 (For students from China)*
May 14, 2021 (For students from other countries)



Registration Information

Online application only.
Please scan the QR code or find the link in our website.
<http://oga.nthu.edu.tw/global-summer-school/lang/en>

- ※ National Tsing Hua University Global Summer School (GSS) reserves the right to admit or decline students.
- ※ Students holding a People's Republic of China passport must apply for a Taiwan Entrance Permit by The National Immigration Agency, Taiwan, ROC and must pay the Fee US\$25 in advance. (Note: Students should apply for "往來台灣通行證" by themselves).

* Because of the visa process, the nomination deadline would be early for students who hold the passport of People's Republic of China.

MEDICAL INSURANCE

Please be sure to purchase and obtain a medical and accident insurance before your arrival. During your stay in Taiwan, the insurance should cover medical and hospital expenses for sickness or accidents. Medical or hospital expenses are expected to be paid at the time of treatment in Taiwan.

PROGRAM FEES

Regular US\$2,400
Partner University Students US\$2,000
We charge additional US\$200 for each of the optional courses.

Group Discounts:

- (1) 2 students, each of you may enjoy US\$50 discount.
- (2) 3 students, each of you may enjoy US\$80 discount.
- (3) 4 students and above, each of you may enjoy US\$100 discount.

It fine to enjoy partner universities discount and group discount together.

※ Online Course Fee:

If you are unable to participate in physical courses due to the COVID-19 pandemic and border control, you could consider taking our online courses.

- (1) The course fee is US\$1,200 (for Program A only).
- (2) Discounted price of US\$1,000 for students from our partner universities.
- (3) We charge additional US\$200 for each of the optional courses.
- (4) No group discount.