

KYUSHU UNIVERSITY

<https://www.kyushu-u.ac.jp/en/>

Japan in Today's World (JTW)

<http://www.isc.kyushu-u.ac.jp/jtw/>



e-mail: intlr-jtw@jimu.kyushu-u.ac.jp

Japanese Language and Culture Course (JLCC)

<http://www.isc.kyushu-u.ac.jp/jlcc/>



e-mail: intlr-isc@jimu.kyushu-u.ac.jp

Summer in Japan (SIJ)

<http://www.isc.kyushu-u.ac.jp/sij/>



e-mail: sij-kyushu@jimu.kyushu-u.ac.jp

ASEAN in Today's World (AsTW)

<http://www.isc.kyushu-u.ac.jp/astw/>



e-mail: astw-program@jimu.kyushu-u.ac.jp

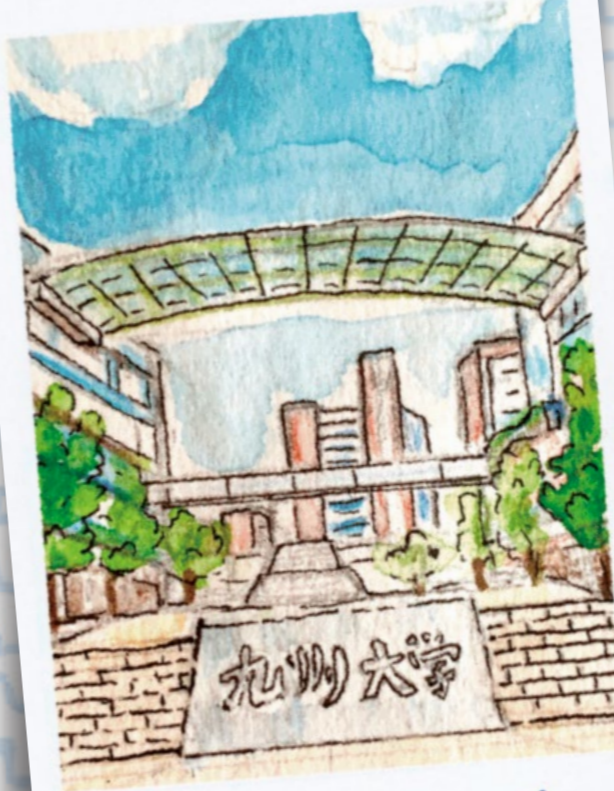
Illustrator:
Juliette Chatenier JTW 2019-20



Fukuoka Yatai



Rice Harvesting Trip



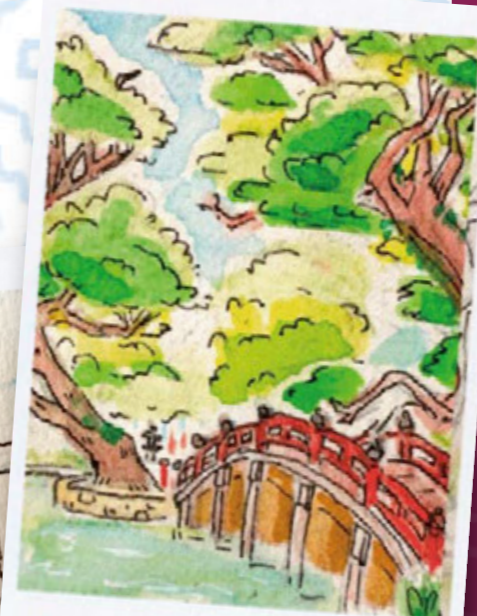
Kyushu University



Ryūmon Falls



Sakurai Futamigaura



Dazaifu Tenmangu



九州大学
KYUSHU UNIVERSITY

GATEWAYS to JAPAN and BEYOND

2021-2022

Kyushu University's Short-Term Study Programs
for International Students



JTW
Japan in Today's World



JLCC
Japanese Language and Culture Course



SIJ
Summer in Japan



AsTW
ASEAN in Today's World

Contents

- ▶ The Programs 2
- ▶ JTW 3
- ▶ JLCC 6
- ▶ SIJ 9
- ▶ AsTW 11
- ▶ Living in Fukuoka 12



Kyushu University, a comprehensive national university in Japan, is one of the country's leading higher education institutions. Diligently dedicated to its missions since its establishment in 1911, today the University is globally recognized for its top-rate education, excellence in cutting-edge research, and strong legacy of international exchange. Its main campus has in recent years been relocated and newly built, now having the country's largest campus area and world-class facilities to further pursue its global engagement. The home of Kyushu University is Fukuoka City, a pleasant and popular regional city located on the northern shore of Kyushu Island. Known for a dynamic mixture of rich history and modern economy, Fukuoka serves as an important hub of education, business, and cultural exchange in the country. International students all over the world – you are all welcome to Kyushu University through these “Gateway to Japan” study programs!

The Programs

Japan in Today's World (JTW)

Japan in Today's World is a one-year, English-based, comprehensive study program for international students designed to introduce Japanese culture and society in our rapidly changing world today. JTW offers a package of extensive living-and-learning experiences, including a range of thematic courses, language courses, and independent study projects as well as field study trips, one-on-one tutor arrangements, home visit opportunities, and more. One semester participation is possible, and limited scholarships are available on a competitive basis.

Japanese Language and Culture Course (JLCC)

Japanese Language and Culture Course is an eleven-month program from October for international students majoring in Japanese studies at their home institution. It is organized for those who wish to gain a deeper understanding of Japanese society and culture with further opportunities to improve Japanese language skills for conducting research in the area of Japanese studies.

Summer in Japan (SIJ)

Summer in Japan is a four-week, summertime, intensive study abroad program that offers for credit to undergraduate students. Using English as the primary medium of instruction, SIJ aims to introduce those with entry-level knowledge about Japan to its language, society and culture by offering in-class academic coursework and a variety of off-campus activities, including study trips, tutors and a home stay for experiential learning.

ASEAN in Today's World (AsTW)

ASEAN in Today's World is a two-week, intensive academic program focusing on ASEAN affairs and languages. Designed for university students from all over the world, and held each year in spring, it is jointly sponsored by a consortium of ASEAN universities who rotate as program host. Led by Kyushu University, AsTW enjoys the strong support of the ASEAN Secretariat and the ASEAN University Network.

Overview

JTW is an ideal program for your year abroad if you are looking for an opportunity to learn about contemporary Japanese culture and society while not having Japanese proficiency. JTW enables you to extensively study at one of Japan's top universities in one of the most popular cities across the country. This is an English-taught program, but it also offers you the opportunity to start learning or to further hone your Japanese skills through the University's effective language program. JTW runs for one year, starting in October and ending in July the following year. You are, nonetheless, welcome to join for only one semester, either Fall-Winter (Oct.-Feb.) or Spring-Summer (Apr.-Jul.).

JTW offers you a comprehensive package of living and learning experiences including cultural immersion for experiential learning as well as academic learning for credit. Students of any academic majors are welcome; you may choose a portfolio of study suited to your needs across a broad range of courses and activities. JTW is a culturally diverse group of about 50-60 students coming from leading universities all over the world. The JTW faculty coordinators – university faculty members with a rich background in international education and research – work closely with you. You will also have your own Japanese student partner, a JTW tutor, who will be on hand to help you throughout your stay.

Study Period Options

Academic year (recommended): October - July
Single semester: October - February or April - July

Eligibility

You are eligible for JTW if you...

- ✓ Are enrolled in an accredited undergraduate degree program outside Japan;
- ✓ Will have completed at least one academic year of college before starting at JTW;
- ✓ Have a strong academic record (successful applicants usually have a GPA of 3.2 or higher);
- ✓ Have the necessary English proficiency— non-native speakers must achieve minimum. TOEFL scores of 550 (PBT), 213 (CBT), or 79 (IBT), or a minimum IELTS score of 6.0, indicating skill levels in listening, reading, writing, and speaking required for successful program participation.

Postgraduate students may apply, but should bear in mind that JTW is designed for undergraduates, who are given priority in admission.



Academic Programs

As a participant of JTW, per semester you will enroll in a minimum of six credit-awarding courses as introduced below.

JTW Core Courses

These courses are the core of JTW's academic learning component. These thematic courses address a wide range of topics in global Japanology, including courses on history, literature, popular culture, economics, business, education, law, religion, politics, and environmental issues, among others. All the courses are taught in English by enthusiastic instructors from a variety of faculties at Kyushu University. You are required to enroll in at least one JTW core course per semester. (2 credits/course; 3 credits negotiable)

Japanese Language Courses – JACs

Kyushu University's JACs offers eight levels of comprehensive Japanese language instruction, from beginning to advanced. There are also skill-specific courses on writing, speaking, and kanji. Per semester, each course consists of two quarters (7.5-week sessions per quarter), and each session is conducted as an intensive, small group, practical session. Up to three JACs courses may be counted toward the six courses enrollment requirement. (2 credits/course)

Independent Study Project (ISP)

ISP is an optional, semester-long, topic-driven research project that you may carry out within the field of or closely related to Japanese studies of your interest. Your ISP is supervised by University faculty members who are arranged by the JTW program, and toward the end of a semester you are required to present the findings both in written and oral forms. Only one ISP is counted toward the six courses enrollment requirement. (2 credits/course)



Advanced Laboratory Research (ALR)

ALR is another optional opportunity for you to design and carry out a research project at advanced levels in engineering, general science, agriculture, or pharmacy. You will plan and carry out an intensive laboratory research project under the guidance of a faculty specialist in the relevant area. An ALR counts as two courses towards the required six per term. (2 credits/semester)

Regular Faculty Courses

You may also enroll in for credit courses that are offered by faculties outside JTW – such as Law, Economics, Design, Science, Engineering, etc. – and primarily for their respective degree-seeking students. Postgraduate courses are not available. Up to three regular faculty courses may be applied to the six-course requirement. (2 credits/semester)

Experiential Learning Activities

JTW also provides the following resources and opportunities for your experiential learning of history and contemporary culture and day-to-day social life in Japan.

JTW Field Study Trips

JTW conducts a total of 11-13 field study trips over the course of a program year (Oct.-Jul.), roughly at a once-a-month pace. Most trips will take you somewhere in the northern part of Kyushu Island, including Nagasaki. Some trips involve physical activities such as rice reaping and planting, seated meditation at a Buddhist temple, and interacting with local elementary school students in their classrooms. The JTW program covers most of the costs for these trips, while you are required to cover a small part of the expenses.

Home Visit Program

If interested, you will be introduced to a Japanese family living in the Fukuoka City area, typically with school-age children. During your program participation, your host family will host you on periodic weekend visits to their home and may take you out to popular local sites and events. Some students end up staying with more than one host family and developing warm friendships that last well beyond their program participation period.

Tutors and Conversation Partner Programs

Your JTW tutor and conversation partner are Japanese students at Kyushu University who provide one-on-one assistance to you. Tutors will look after you in a variety of ways; they will help you to settle in, explore Fukuoka City with you, accompany you on program outings, and arrange informal parties and trips. You also have the option of being assigned one or more conversation partners should you wish to have more regular and informal occasions to practice Japanese language.



Tuition & Waiver

Inquire at your International Office whether your home university has an active university-wide student exchange agreement with Kyushu University that includes a mutual tuition waiver arrangement. If so, and if you are nominated as an exchange student by your university, then you may be exempt from paying tuition. Otherwise, you will be charged 14,800 Yen (as of 2020) for each registered credit – a total of 177,600 Yen (for 12 credits) per semester (rate is subject to change).

Scholarships

If your home university has a student exchange agreement with Kyushu University, you may be qualified to apply for one of a limited number of scholarships funded by the Japan Student Services Organization (JASSO). The award includes a monthly stipend disbursed during your period of enrollment. For details, see <https://www.jasso.go.jp/en/>

Housing

Throughout your program participation, you are required to live in university-provided, self-catering residence facilities on Kyushu University's main campus, where JTW is based. You will be guaranteed a furnished room with balcony and private bath, fitted with a single bed, futon and sheets, writing desk with lamp, chair, wardrobe, kitchenette, refrigerator and a combined air conditioner/heater. Coin-operated washing machines and dryers are also available in public spaces. Main classrooms, cafeteria options, and the University's headquarter building and the Central Library are all within close walking distance.



Healthcare & Health Insurance

Kyushu University's Center for Health Sciences and Counseling provides a variety of healthcare services for all campus members, including JTW students. Along with basic infirmary services for addressing relatively minor physical issues, the Center also offers free-of-charge multicultural student counseling services in English, Chinese as well as Japanese. As for health insurance, you will be required by law to sign up for Japanese National Health Insurance, which covers 70% of your medical bills.



Applying to JTW

To be considered for the JTW program, you must arrange for your application and supporting documents to reach us by February 10, for October enrollment, or by November 10, for April enrollment. The materials to submit include:

- 1) A completed **JTW Application Form**
- 2) An 800-word **essay** on "Why JTW is for me"
- 3) An **independent study project proposal** (if applicable)
- 4) An **advanced laboratory research proposal** (if applicable)
- 5) Two **letters of recommendation**
- 6) Your **official academic transcript(s)**
- 7) A copy of your most recent **TOEFL or IELTS score report** (if you are not a native speaker of English)

For application instructions and forms, and further program information, see:

<http://www.isc.kyushu-u.ac.jp/jtw/>

Please send applications and all inquiries to:

The JTW Office
International Student Exchange Division
Kyushu University
4th Floor, Center Zone 4 Building
744 Motooka, Nishi-ku, Fukuoka
819-0395 JAPAN

tel. +81 92 802 2229
 fax. +81 92 802 2287
 e-mail: intlr-jtw@jimu.kyushu-u.ac.jp



日本語・日本文化研修コース

(JLCC: Japanese Language and Culture Course)

概要

日本語・日本文化研修コースは、留学生センターが開設するもので、日本語・日本文化研修留学生(以下「日研生」と略す)が、今後の日本研究に必要となる日本語能力の向上を図るとともに、日本の社会や文化に関する理解を深め、諸外国の将来を担う世代に日本への興味・関心を伝播し、日本の事情に通じた指導者となる人材を育成することを目的としている。

日研生は留学生センターに所属し、同センターで開講する「日本語論」、「日本社会文化論」及び「自主研究」の必修科目と、各自の日本研究に関する専攻分野と日本語能力に応じて、文学部、経済学部、法学部などで開講される日本の社会や文化に関する学部学生向けの授業を選択科目として受講することができる。

さらに、留学生センターで開講する技能別の日本語の授業(総合、漢字、会話、作文)も受講することができる。

■ 受入定員

30名以内(大使館推薦2名程度、大学推薦1名程度、他私費留学生)

■ 受講希望者の資格、条件等

本コースは、日本国外の大学に在籍し、原則として学部学生(コース参加時1年次生を除く。)で、日本研究を主専攻としており、既に基礎的な日本語の学習を終え、本学において日本語で行われる日本の社会や文化に関する授業を受講できる日本語能力(日本語能力試験N1合格程度が望ましい)を有する者。

■ コース期間

2021年10月初旬~2022年8月下旬
(2021年9月下旬にオリエンテーション実施)

■ 科目の概要

① 必修科目と選択必修科目

10月から翌8月までの11ヶ月間に、次表に掲げる必修科目(2単位)、選択必修科目(24単位)と選択科目(4単位以上)を修得する。

	授業科目	第1期(10-3月)	第2期(4-8月)
必修科目	自主研究		2単位(30時間)
選択必修科目	日本語論	12単位(180時間)	
	日本社会文化論	12単位(180時間)	
選択科目	日本の社会や文化に関する学部学生向け授業	4単位(60時間)以上	

	Subjects	Semester 1 (Oct - Mar)	Semester 2 (Apr - Aug)
Compulsory Subject	Independent Study Project (ISP)		2 Credits (30 Hours)
Elective Compulsory Subjects	Japanese Language & Linguistics	12 Credits (180 Hours)	
	Japanese Culture & Society	12 Credits (180 Hours)	
Elective Subjects	subjects regarding Japanese society and culture offered for undergraduate students by various departments	4 Credits (60 Hours) or more	

Course Objective

Japanese Language and Culture Course (JLCC) is organized for those who wish to gain a deeper understanding of Japanese society and culture with further opportunities to improve Japanese language skills for conducting research in the area of Japanese studies by the International Student Center at Kyushu University.

■ Enrollment 30 (includes, Monbukagakusho Scholarship recipients and privately-funded students)

■ Eligibility Applicants must fulfill all of the following conditions:
 ▶ in principle, be registered as an undergraduate student and majoring in Japanese studies at their home institution (first year students may not participate).

▶ have completed basic Japanese language courses and be ready to take classes offered in Japanese at Kyushu University.

▶ preferably will have passed the Japanese Language Proficiency Test (JLPT) N1 or possess the equivalent proficiency in Japanese language.

■ Program Period early October 2021 to August 2022
(Orientation will be held in the late September 2021)

■ Overview of Curriculum (Program completion requirements)
 JLCC students are required to complete the following requirements:

① Compulsory subject: Independent Study Project (ISP, 2 credits)

② Elective compulsory subjects:

▶ Japanese Language & Linguistics (12 credits)

▶ Japanese Culture & Society (12 credits)

③ Elective subjects: at least 4 credits

② 選択科目

本学の学部学生を対象に基幹教育科目または専門教育科目として開講されている授業科目の中から、本コースのコーディネーターの指導のもとに、各自の日本研究に関する専攻分野と日本語能力に応じて選択の上受講する。

③ その他の講義、見学、地域交流等の参加型科目

教育活動の一環として、コース期間中に福岡近郊や九州地域などを巡る見学旅行を実施し、日本の文化や歴史、自然に触れる機会を提供する。また報道関係者、日本文化研究者をゲストティーチャーに招き、講演会を行う。自治体や学校、国際交流団体などが実施する様々なイベントに参加することにより、地域との交流を促進し研修の効果を上げる。

指導体制

日研生には、留学生センターの教員がコース・コーディネーターとして各自の学業面等について個別指導にあたる。さらに、生活面や異文化適応に関しては、留学生指導に関する専門の教員が適宜対応する。加えて、学生レベルでのサポート体制として、日本人学生によるチューターを1名ずつ配置し、日常生活や修学上のサポートを行うとともに、日本人学生との交流が図れるような環境を整えている。

成績証明書、修了証書の発行

履修した科目は、履修認定のうえ成績証明書が発行され、所定の要件を満たした日研生には、修了証書を授与する。

Note: Elective subjects include the subjects offered by the Faculty of Arts & Science and the specialized subjects offered by the Undergraduate Schools of Letters, Economics and Law. Students need to select at least two subjects (4 credits) related to their major and Japanese level with their coordinator's advice.

Moreover, students can take different level's Japanese courses offered by the International Student Center.

Study Trips and Other Activities

Study trips and other activities are provided to visit Japanese cultural sites and to have close contact with Japanese culture, history and nature.

Guest Lectures

To better meet the students' needs, we also invite scholars, journalists to come to campus to give a series of guest-lectures on selected topics. We are planning to invite business administrators and those who are actively involved in various fields in Fukuoka in the future.

Support System for Students

As the JLCC coordinator, a teaching staff from the International Student Center will be assigned to JLCC students for their overall support. In addition, teaching staff from the International Student Center and Japanese students (tutors) are also assigned to JLCC students so that he/she can discuss matters concerning their daily life or study and communication.

Grade Transcript & Certificate

Grade Transcript with all registered credits will be issued. The students who have completed all necessary classes will be granted a certificate.



宿舎

日研生は、コース期間中、伊都キャンパスの留学生用宿舎に入居できる。宿舎は、バス・トイレのほか、机、書棚、ベッド、衣料ダンス、冷蔵庫、エアコン、インターネット接続完備。

修了生へのフォローアップ

九州大学日本語・日本文化研修コースは、本学の英語による短期留学プログラムであるJTW (Japan in Today's World) とともに、日本語による短期留学プログラムとして国内外で高い評価を得ている。また、本コース修了者の満足度は高く、その多くが在籍大学卒業後、再び本学や日本の他の大学院に進学したり日本企業に就職する等している。

Housing

University's dormitories at Ito campus are available for those participating in the JLCC, while they are enrolled. The dormitories offers fully furnished rooms equipped with a bathroom, a toilet, a desk, a bookshelf, a bed, a closet, a refrigerator, internet connectivity and air-conditioning.

Follow-up for Alumni

Japanese Language and Culture Course (JLCC) at Kyushu University has been highly-praised as a short-term program taught in Japanese both at home and abroad as well as another short-term program, Japan in Today's World (JTW), which offers courses in English. JLCC has enjoyed high satisfaction rates from participants and as a result, many of them have chosen to further their studies at Kyushu University graduate schools and/or at other academic institutions in Japan. Also, some have obtained jobs at Japanese companies.



問合せ先

九州大学国際部留学課留学生係
 ▶住所 〒819-0395 福岡県福岡市西区元岡744
 ▶Tel : +81-92-802-2291 Fax : +81-92-802-2287
 ▶E-mail : intl-isc@jimu.kyushu-u.ac.jp
 JLCCホームページ <http://www.isc.kyushu-u.ac.jp/jlcc/>
 留学生センターホームページ <http://www.isc.kyushu-u.ac.jp/center/home.htm>
 九州大学ホームページ <https://www.kyushu-u.ac.jp/>

Contact

International Student Exchange Division, Kyushu University
 ▶Address: 744 Motoooka, Nishi-ku, Fukuoka 819-0395, JAPAN
 ▶Tel : +81-92-802-2291 ▶Fax : +81-92-802-2287
 ▶E-mail : intl-isc@jimu.kyushu-u.ac.jp
 JLCC : <http://www.isc.kyushu-u.ac.jp/jlcc/en/>
 International Student Center:
<http://www.isc.kyushu-u.ac.jp/center/home.htm>
 Kyushu University:
<https://www.kyushu-u.ac.jp/en/>

Overview of the Program

Summer in Japan (SIJ) is a 4 week, summer time, intensive study abroad program that Kyushu University offers for credit to students from around the world. Using English as the primary medium of instruction, SIJ aims to introduce, in an intensive and effective manner, those with entry-level knowledge about Japan to its contemporary society and culture by offering in-class academic coursework and a variety of off-campus activities, including study trips and a homestay for experiential learning.

Program Duration and Period

- 4 weeks in summer term
- The program starts around the end of June or the beginning of July.

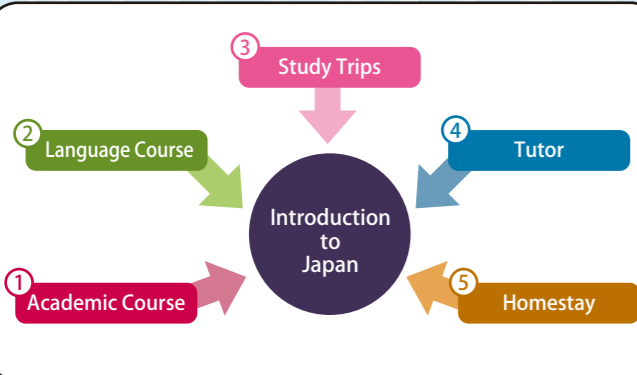
Eligibility for Admission

To be considered for participation in SIJ, applicants are required to meet all of the following four criteria:

- 1 Be undergraduate students who are currently enrolled in degree programs at accredited higher education institutions outside Japan
- 2 Hold a grade point average of 3.2 or higher on a 4.0 scale at the time of application
- 3 Hold a TOEFL iBT score of 79 or higher (or the equivalent), if a non-native English speaker, by the time of application
- 4 Plan to continue their degree programs at their home universities following completion of SIJ.

Five Components of SIJ Program

SIJ is based on the five components of resources for participants' academic and experiential learning of contemporary Japanese society and culture. Each factor also contributes to supplementing the effectiveness of the other factors.



1. Academic Course - Introduction to Contemporary Japan (ICJ) (2 credits)

As a quality, theme-based course taught in a classroom setting, the ICJ course challenges participants to acquire, or further develop, their knowledge of key issues and perspectives on contemporary society, culture, economy and the environment of Japan (and other countries in Asia relevant to the themes).

The ICJ course is co-taught, in a relay manner, mainly by a group of faculty members at Kyushu University's International Student Center, who are experts in providing international education to exchange students from all around the world.

2. Language Course – Japanese Language Course (JLC) (1 credit)

The main objective of the Japanese Language Course (JLC) course is to help participants develop their Japanese language skills as a pivotal cultural skillset that is essential to effectively enhancing their immersion experience into Japanese society and culture through their daily social interactions and communication.

Participants are required to take a placement test to determine the level of JLC course in which they should enroll, based on the level of their Japanese proficiency at the time of participating in SIJ.

3. Study Trips – Off-Campus Experiential Learning

SIJ conducts various study trips in and around Fukuoka City. These activities aim to provide participants with valuable opportunities to substantiate and deepen the knowledge they have gained from the ICJ course through direct observation and experience with diverse aspects of Japanese culture and society beyond the classroom and off campus.

In past years, SIJ organized some of the following study trips: Hakata Gion Yamakasa – the most famous festival parade in downtown Fukuoka, Kushida Shinto Shrine – the patron Shinto shrine of Hakata Area, Cha no Yu – Japanese tea ceremony, Hakata Traditional Handicraft Making – taught by masters of Hakata doll and traditional toys, Fukuoka City Museum – to know the history of Fukuoka and its encounter with the world, etc.



4. Tutor – One-on-One Interaction and Friendship

SIJ assigns Japanese tutors to all participants: one tutor for each participant. Those tutors are fulltime local students at Kyushu University, mostly at the undergraduate level, who are enthusiastic about helping and are seeking opportunities to interact with international students on campus. These tutors aim to assist participants in smooth adjustment into campus and social lives as well as helping you develop your circle of friends.

5. Homestay Experience – Immersion Experience in Community Settings

SIJ arranges homestay opportunities for all participants: one host family for each participant. Daily interactions with host families in community settings help facilitate participants' immersion experience into Japanese social life and daily-life communication, which further enhances their learning outcomes of the ICJ course. These homestay experiences also aim to help substantiate and deepen knowledge that participants gain mainly from their respective JLC courses.

To complete the SIJ program, students must enroll in the two courses for three Kyushu University credits and participate in all official events. Students who meet all SIJ requirements will be awarded a certificate issued by Kyushu University.

Program fee

The program fee is around 170,000 JPY -200,000JPY (Fee is subject to change). The fee includes the tuition fee for two courses, study trips, accommodation and airport transfer, but excludes the cost of international airfare, meals, local transportation and personal expenses (souvenirs, laundry, etc.)

Scholarships

The SIJ program does not hold financial resources to support prospective participants. Nonetheless, Kyushu University may possibly allocate university-level resources to offer scholarships, which may cover some of the program fee (mentioned above), only for those applicants who meet following criteria:

- ◆ Those with academic records that an SIJ selection committee evaluates as particularly strong.

Please also note that availability of scholarships is fully contingent upon the University's budgetary conditions, and that the availability is scheduled to be determined in April.



Housing

First two weeks: University dormitory
Latter two weeks: Homestay with local host family

Overseas Insurance

The participants are required to purchase their own travel insurance for the whole period of the program. A copy of the insurance policy should be submitted to Kyushu University before traveling to attend the SIJ program.

Application

Students must submit the following documents via email:

- 1) A completed SIJ Application Form
- 2) A letter of recommendation from the supervisor or the equivalent figure
- 3) A short essay
- 4) A copy of an official English test score report
- 5) An official academic transcript

For your reference, please access:

<http://www.isc.kyushu-u.ac.jp/sij/>



Overview of the Program

ASEAN in Today's World (AsTW) is a two-week international study program focusing on ASEAN and East Asian affairs. It is designed for university students from around the world. The medium of instruction is English. The program features a special lecture by an official of the ASEAN secretariat.

AsTW was launched in March 2009 in Thailand. Since then, Kyushu University has organized the program, closely working with the host universities in ASEAN below.

2009-2011 Mahidol University in Thailand

2012-2014 Ateneo de Manila University in Philippines

2015-2017 Vietnam National University, Hanoi in Vietnam

2018-2020 University of Malaya in Malaya

2021-2023 Mahidol University in Thailand

Program Dates

Spring term: The start of the program period varies from the end of February to the beginning of March.

Eligibility for Admission

To be considered for admission to AsTW, applicants must be:

- ◆ currently enrolled in a degree program at an accredited university or college outside Japan;
- ◆ in good academic standing (with a grade point average of 3.0 out of 4.0 or higher);
- ◆ proficient in English for academic purposes (if a non-native speaker, able to demonstrate TOEFL-PBT 530 / TOEFL-iBT 68 / TOEFL-CBT 190 / IELTS-5.5 or the equivalent); and
- ◆ planning to continue university study following AsTW.

Curriculum

The AsTW curriculum consists of ASEAN Studies Courses (ASC) and Asian Languages & Culture Courses (ALC), supplemented by co-curricular Study Trips, providing students with rich and unique learning experiences. To complete the AsTW program, students must enroll in two courses (one each from ALC and ASC offerings) and participate in all official student activities. Students who meet all the requirements will be awarded a certificate issued jointly by Kyushu University and the host University.

*The courses below are subject to change.

ASC: ASEAN Studies Courses

2 credits (30 credit hours) per course

- ▶ Current Affairs of ASEAN and East Asia
- ▶ Food and Environmental Issues in Asia
- ▶ Multi-Culturalism in Asia

ALC: Asian Languages & Cultures

2 credits (30 credit hours) per course

- ▶ Basic Japanese Language & Culture
- ▶ Basic Thai Language & Culture
- ▶ English as a Communication Tool in the ASEAN Context



Program fee

The Program fee is 159,200JPY. This fee includes the tuition fee for two 2-credit courses, study trips, accommodation, some meals and airport transfer; but exclude the cost of international airfare, meals not included in the program, local transportation, and personal expenses.

Scholarships

Kyushu University offers a limited number of scholarships (which cover the AsTW program fee) to ASEAN students who present strong academic records. Recipients are selected by Kyushu University.

Housing

All participants will stay in the accommodation provided by the host university.

Overseas Insurance

The participants are required to purchase their own travel insurance for the whole period of the program. A copy of the insurance policy should be submitted to the host university before the date of travel.



Application

Students must submit the AsTW application form and the following supporting documents:

- 1) A completed **AsTW application form** ;
- 2) An 800-word essay on "**The reasons I want to enroll in AsTW**";
- 3) Official academic transcripts of all undergraduate study ;
- 4) A university or college diploma copy (for graduate students only) ;
- 5) A letter of recommendation (from a faculty member other than a language instructor) ;
- 6) An official document, which shows proof of enrollment, issued by the home university ;
- 7) Certificate of Health ; and
- 8) A copy of a recent official TOEFL, IELTS, or other English assessment score report (for non-native English speakers only).

For application instructions and forms, please visit:

<http://www.isc.kyushu-u.ac.jp/astw/>

*Applications sent by email are also acceptable.



Living in Fukuoka

The City

A pleasant coastal city of 1.5 million people and the largest metropolis on the island of Kyushu, Fukuoka is Japan's gateway to continental Asia. China and Korea are both close by—the city lies midway between Tokyo, Shanghai, and Seoul—and life here still reflects an ancient heritage of cultural exchange. At the same time the city enjoys a growing reputation as a modern, vibrant regional trade and production center. Most recently MSNBC-Newsweek declared Fukuoka a “city of substance,” ranking it among the “ten most dynamic cities” in the world!

The signs of prosperity and energy are everywhere. Fukuoka boasts impressive new levels of investment in building and manufacturing, one of the country's busiest domestic and international airports, a thriving port and shipping industry, excellent public transportation, a compelling skyline mixing traditional and modern architecture, the Yahuoku! Dome (Japan's biggest entertainment and sports venue), numerous upscale

shopping malls and boutiques, and a rich variety of amusements, including galleries, theaters, museums, and clubs, all set against a backdrop of thickly forested hills overlooking the superb natural harbor of Hakata Bay.

Host to national and prefectural government offices, and to the regional headquarters of many major companies, Fukuoka is Kyushu's most active, and largest, business center. China, Korea, and the United States have established consulates in the city, too. An increasingly popular tourist destination, Fukuoka lures millions each year, many from abroad, who come to experience its colorful Dontaku and Yamakasa festivals, visit its famous shrines and temples, wander through outstanding museums, or simply explore its lively markets and colorful streets. And Fukuoka's many attractive, well-maintained parks and beaches appeal to Japanese and foreigners alike.

With eleven major universities and 77,000 students, Fukuoka is noted as a city of youthful verve and fashion. All parts of the

urban area are easily accessible by subway, bus, or bicycle, and Fukuoka's 24,000 foreign residents, most of them from China and Korea, find the bustling downtown district of Tenjin well-stocked with imported foods and foreign language books. The renowned nightlife quarter of Nakasu also offers a wide variety of restaurants with all kinds of traditional fare and international cuisine. The fresh seafood of Fukuoka is famous throughout Japan!

The best seasons here are the spring and fall when clear blue skies make a perfect backdrop for the abundant cherry blossoms and vivid red maple leaves. While generally mild in winter (with temperatures seldom falling below -3°C), it can be quite humid in summer (though temperatures rarely rise above 33°C), particularly during the short rainy season.

Estimated Expenses

Living costs are significantly lower in Fukuoka than in Tokyo, Kyoto, or Osaka, not least because residing on campus cuts down on local travel costs. You will need between 100,000 and

115,000 yen a month to get by depending on your dormitory room choice and habitual use of water and electricity, which varies greatly between individuals.

Kyushu

A land of mountains, hot springs, and historic treasures, Kyushu has always been at the center of Japan's cultural contacts with the world outside. You can take advantage of winter and spring breaks to explore the island or other parts of Japan, while Korea and China are just a short trip away by hydrofoil or plane. It's a great way to deepen your understanding of this fascinating part of Asia.



② Takachiho Gorge (Miyazaki)



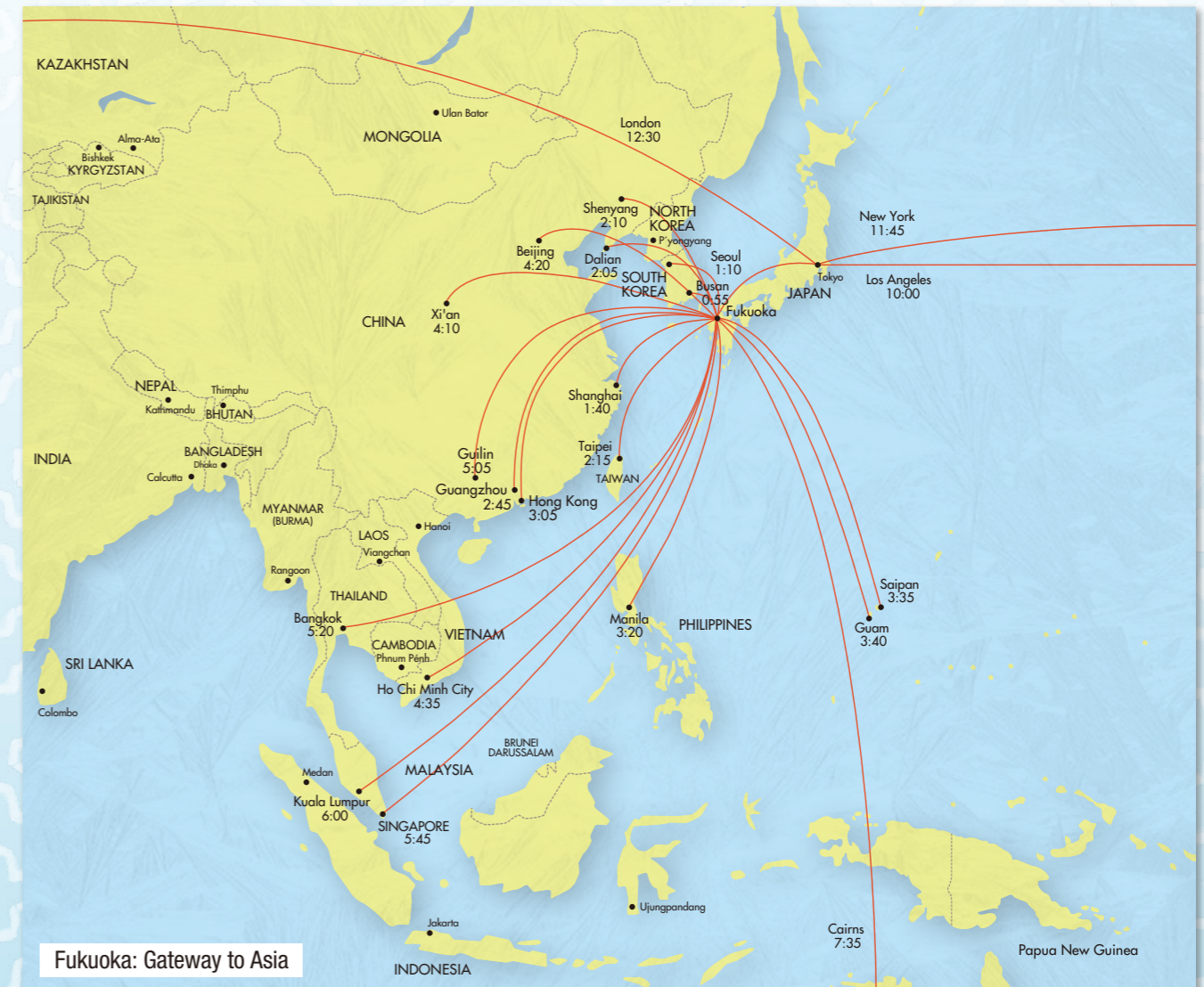
① Fukuoka City (Fukuoka)



③ Yutokuinari Shrine (Saga)



Kyushu Island



Fukuoka: Gateway to Asia